



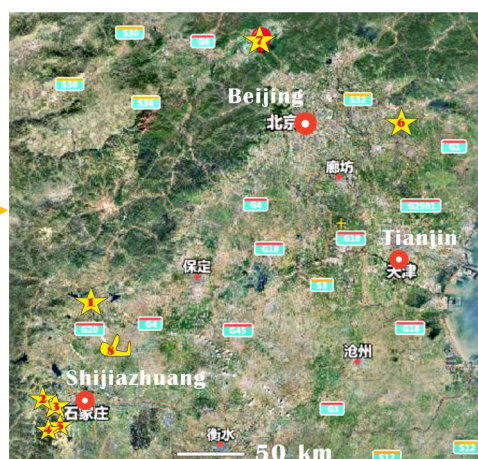
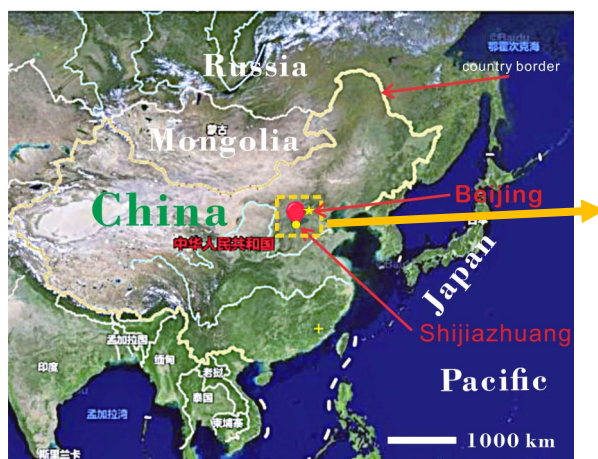
The 1st International Biopetrological Congress

CIRCULAR 2

Sponsored by IBA, and organized by 13 institutions, the 1st International Biopetrological Congress will be held in Shijiazhuang, China, on September 17-21, 2023, and you are invited to attend this congress, give oral presentations or posters, and enjoy the field trips.

Venue

As the capital city of Hebei Province, China, Shijiazhuang was selected as the venue of the congress since there are a lot of wonderful outcrops of Precambrian and Cambrian microbialites near it. It is very near to Beijing (~300 kms NE), the capital of China, and is the home to Hebei GEO University.



Several microbialite profiles as the field trips. ☆1, 3, 6: Mesoproterozoic microbialite sequences. ☆2: Palaeoproterozoic microbialite sequence. ☆4, 5: Cambrian microbialite sequences. ☆7: the Great Wall. ☆8: The Shijiazhuang Zhengding International Airport.

BIOPETROLOGY is a new interdisciplinary science covering the studies of biomineralization, reef rocks, microbialites, and all other biogenic rocks, i.e., bioliths. It deals with not only the characteristics and formation of bioliths, but also their relationship with paleoenvironments and formation of ore deposits and oil and gas reservoirs.

IBA, International Biopetrological Association, is a non-profit international academic society registered in the United States to serve all scholars engaged in biopetrological research. Currently it has more than 300 members from 29 countries.

IBC is a non-profit biennial international congress sponsored by IBA and voluntarily organized by universities and research institutions. It aims to provide a platform for researchers in biopetrology and the related disciplines such as sedimentology, microbiology, paleontology, and paleoceanology, to present and exchange their research results and discuss how to promote the development of the disciplines.

Scientific programs

The scientific programs of the congress include: (1) pre-conference short course, (2) plenary presentations, (3) oral presentations, (4) poster sessions, (5) awarding ceremony, (6) mid-conference field trip, and (7) post-conference field trips.

Scientific topics

The scientific topics of the congress include but not limited to the followings:

- (1) Biomineralization,
- (2) Travertine and modern microbialites,
- (3) Modern reef systems and their environments,
- (4) Co-evolution of ancient reef systems and their environments,
- (5) Progresses in research of ancient reef organisms,
- (6) Formation mechanism of bioliths and their spatial and temporal distribution,
- (7) Geochemistry of bioliths,
- (8) Recognition of extraterrestrial bioliths,
- (9) Advances in taxonomy and ecology of microbes,
- (10) Advances in paleomicrobiology,
- (11) Mass extinctions and microbialites,
- (12) Bioliths and oxygenation of the Earth,
- (13) Bioliths and deep-time carbon cycle: history and models,
- (14) Bioliths and deep-time paleogeography and paleoceanography,
- (15) Bioliths and evolution of Earth system,
- (16) Origins of carbonate micrites,
- (17) Advance in research of dolomites and microbial dolomites,
- (18) Advance in research of abiogenic carbonates,
- (19) Biogenic structures in clastic rocks,
- (20) Formation mechanism of biolith-related oil and gas reservoirs,
- (21) Formation mechanism of large biolith-related ore deposits,
- (22) New methods or thoughts in biopetrology.

Invited plenary presentations

- (1) **Advances in the study of hydrothermal outlets of mid-ocean ridges (ocean black chimneys)**
—by **Xi-Qiu Han**, research fellow from the Second Institute of Oceanology, Ministry of Natural Resources, and chief scientist in oceanic research in China
 - (2) **Advances in the study of life on Mars**
—by **Giorgio Bianciardi**, professor from University of Siena, Italy
 - (3) **Evidence for microbial origin of BIF iron ore**
—by **Yi-Liang Li**, professor from University of Hong Kong
 - (4) **Advances in research of modern microbialites in the Bahamas**
—by **Robert Riding**, professor from the University of Tennessee, USA, and international expert on microbialites
 - (5) **Progress in research of modern microbialites in Australia**
—by **Robert Burne**, professor from the University of Queensland, Australia, and international expert on microbialites
 - (6) **Progress in research of the global carbon cycle mechanism**
—by **Li-Yuan Liang**, the chief scientist of Oak Ridge National Laboratory, USA
 - (7) **Advances in research of origin of dolomites**
—by **Hai-Ruo Qing**, professor from the University of Regina, Canada, and international expert on dolomite research
 - (8) **Progress in research of microbial dolomites**
—by **Hong-Mei Wang**, professor from the China University of Geosciences at Wuhan
 - (9) **Progress in early microbial communities on Earth**
—by **Dominic Papineau**, associate professor from University College London
 - (10) **Advances in study of the evolution of early life**
—by **Shu-Hai Xiao**, professor from Virginia Tech University, and academician of the National Academy of Sciences, USA
 - (11) **Modern travertines in World Nature Heritage Jiuzhaigou and Huanglong Natural Reserve**
—by **Hai-Long Sun**, associate professor from Institute of Geochemistry, Chinese Academy of Sciences
 - (12) **Introduction to the International Society of Palaeogeography**
—by **Sheng-He Wu**, professor from China University of Petroleum, and the president of the International Society of Palaeogeography
 - (13) **The energy basis and molecular mechanism of deep-time iron and manganese mineral-microbe co-evolution**
—by **Juan Liu**, associate professor from Peking University
 - (14) **A blueprint for the development of the discipline biopetrology**
—by **Ya-Sheng Wu**, the President of the Academic Committee of the International Biopetrological Association
 - (15) **Introduction to the microbialites near Shijiazhuang**
—by **Hong-Xia Jiang**, research assistant from Hebei GEO University
-

Sessions

The time for the oral presentations in all sessions is limited to **20 minutes**. Currently, the following 13 academic sessions have been organized, and those with less than 10 oral presentations will be merged:

Session 1: [Advances in geomicrobiology and studies of biomineralization](#)

Convenors (moderators) : **Xian-Cai Lu** (professor at Nanjing University), **Jin-Hua Li** (research fellow at Institute of Geology and Geophysics, Chinese Academy of Sciences), **Hua-Xiao Yan** (associate professor at Shandong University of Science and Technology), **Luisa I. Falcon** (research fellow at National University of Mexico, and member of the Academic Committee of IBA).

Session 2: [Classification, evolution and rock-building of bacteria and algae](#)

Convenors (moderators): **Ke Pang** (associate research fellow at Nanjing Institute of Geology and Palaeontology, Chinese Academy of Sciences, Secretary General of Fossil Algae Committee of Palaeontological Society of China), **Robert Riding** (professor at University of Tennessee, USA, and member of the Academic Committee of IBA), **Peng-Ju Liu** (research fellow at Institute of Geology, Chinese Academy of Geological Sciences), **Gong-Liang Yu** (associate research fellow at Institute of Hydrobiology, Chinese Academy of Geological Sciences), **Li-Jing Liu** (associate professor at Northwest University).

Session 3: [Advances in studies of travertines and modern microbial rocks](#)

Convenors (moderators): **Hai-Long Sun** (associate research fellow at Institute of Geochemistry, Chinese Academy of Sciences), **Qun-Wei Dai** (professor at Southwest University of Science and Technology), **Hao Yan** (assistant professor at Nanjing University).

Session 4: [Temporal and spatial distribution, formation mechanism and resource significance of microbial rocks](#)

Convenors (moderators): **Zuo-Zhen Han** (professor at Shandong University of Science and Technology, and member of the Academic Committee of IBA), **Hong-Wei Kuang** (research fellow at the Chinese Academy of Geological Sciences, and member of the Academic Committee of IBA), **Robert V. Burne** (professor at the University of Queensland, Australia), **Michael Steiner** (associate research fellow at Freie Universität Berlin).

Session 5: [Biological and microbial structures in clastic rocks including MISS](#)

Convenors (moderators): **Yong-An Qi** (professor at Henan Polytechnic University, and member of the Academic Committee of IBA), **Zhong-Wu Lan** (associate research fellow at Institute of Geology and Geophysics, Chinese Academy of Sciences), **Subir Sarkar** (professor at Jabalpur University, India, and member of the Academic Committee of IBA).

Session 6: [Structures of modern reef systems and their interaction with environments](#)

Convenors (moderators): **Ke-Fu Yu** (professor at Guangxi University), **Tian-Ran Chen** (research fellow of South China Sea Institute of Oceanology, Chinese Academy of Sciences).

Session 7: [Evolution of deep-time reef ecosystems and their interactions with environments](#)

Convenors (moderators) : **Le Yao** (associate research fellow at Nanjing Institute of Geology and Palaeontology, Chinese Academy of Sciences, and member of the Academic Committee of IBA), **En-Pu Gong** (professor at Northeastern University, and member of the Academic Committee of IBA), **Markus Aretz** (professor at Paul Sabatier University, France), **Xue-Song Tian** (associate research fel-

low at Chongqing Institute of Geology and Mineral Resources).

Session 8: [Genesis of dolomites and advances in studies of microbial dolomites](#)

Convenors (moderators): **Hong-Mei Wang** (professor at the China University of Geosciences at Wuhan, and member of Geomicrobiology Sub-committee of Chinese Society of Microbiology), **Dominic Papineau** (associate professor at University College London, and member of the Academic Committee of IBA), **Deng Liu** (professor at the China University of Geosciences at Wuhan).

Session 9: [Formation and spatial and temporal distribution of biolith-related reservoirs](#)

Convenors (moderators): **Zhi-Liang He** (professor at Sinopec Research Institute of Exploration and Development), **An-Jiang Shen** (professor at Petrochina Research Institute of Petroleum Geology in Hangzhou), **Ming-Yi Hu** (professor at Yangtze University), **Xiu-Fen Zhai** (senior engineer at Petrochina Research Institute of Petroleum Exploration and Development).

Session 10: [Genesis of BIFs and large manganese ores: biotic vs abiotic](#)

Convenors (moderators): **Yi-Liang Li** (professor at University of Hong Kong), **Xiu-Qing Yang** (associate professor at Chang An University), **Wen-Chao Yu** (associate professor at the China University of Geosciences at Wuhan).

Session 11: [Evolution of ancient oceanic systems and formation of large ores](#)

Convenors (moderators): **Chun-Fang Cai** (research fellow at Institute of Geology and Geophysics, Chinese Academy of Sciences), **Xian-Guo Lang** (professor at Chengdu University of Technology), **Xin-Qiang Wang** (professor at the China University of Geosciences at Beijing).

Session 12: [Origins of carbonate micrite and recent advances in carbonate sedimentology](#)

Convenors (moderators): **Yue-Feng Shen** (associate professor at Hefei University of Technology, and member of the Academic Committee of IBA), **Jian-Gong Wang** (professor at Northwest Branch of China Petroleum Research Institute), **Fritz Neuweiler** (professor at Laval University, Canada).

Session 13: [Black rocks and source rocks and evolution of Earth system and carbon cycle](#)

Convenors (moderators): **Guang-You Zhu** (professor at Petrochina Research Institute of Exploration and Development), **Zhi-Fei Zhang** (professor at Northwest University), **Xiao-Min Xie** (professor at Yangtze University).

Mid-conference field trip



Trip 1 (1 day; free; leader: Hongxia Jiang) -- To visit a Mesoproterozoic microbialite profile near Shijiazhuang. It is featured with exquisite stromatolites, especially the coniform stromatolites (Fig. 1). Photographing and specimen collecting are permitted.

Post-conference field trips

Trip 2 (3 days; leader: Hong-Xia Jiang) -- To visit three Paleoproterozoic and Mesoproterozoic microbialite profiles and two Cambrian microbialite profiles near Shijiazhuang. In addition to columnar and conical stromatolites, there are herringbone-like (Fig. 2), mushroom-like and dendritic stromatolites (Fig. 3). Photographing and sample collecting are permitted.



Palaeproterozoic herringbone-like stromatolites

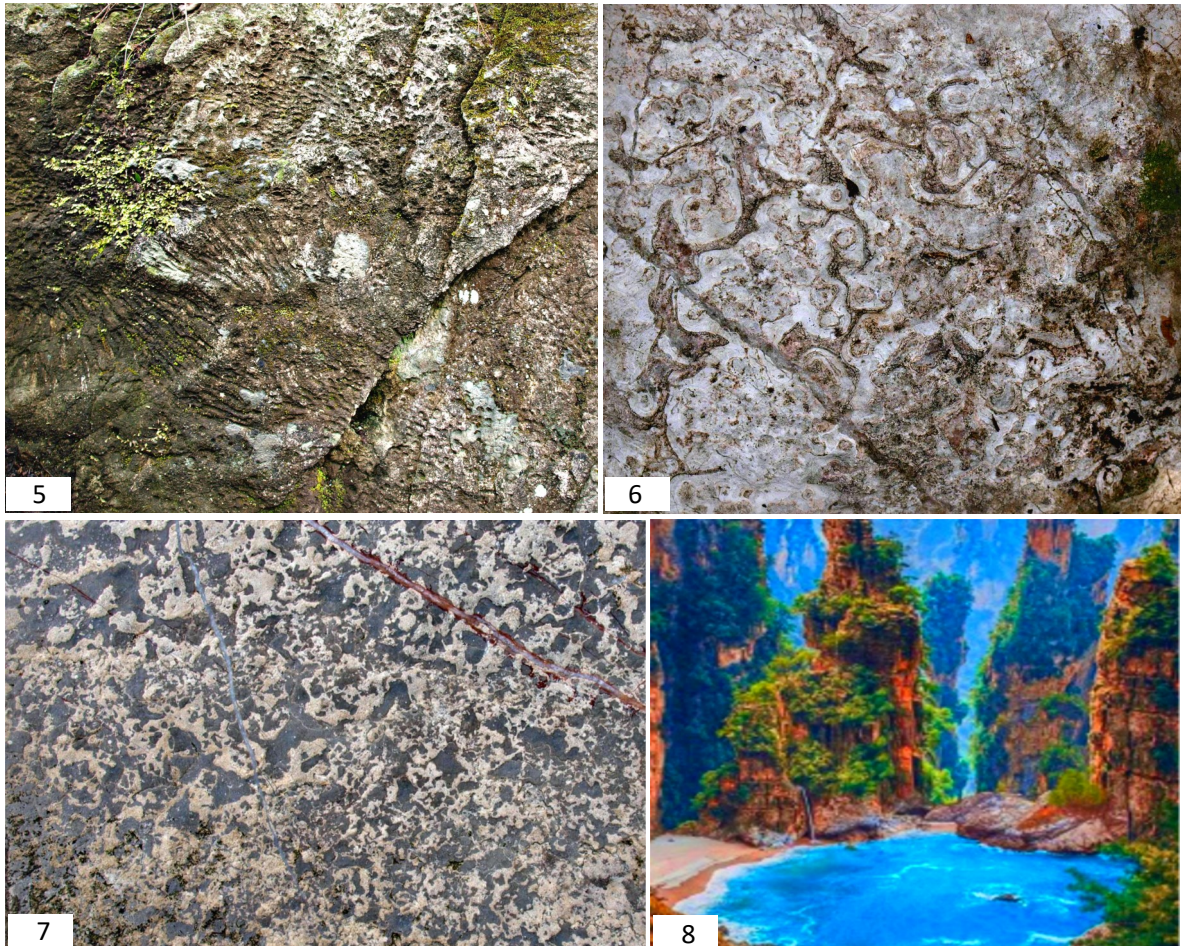


Cambrian dendritic stromatolites

Trip 3 (4 days; leader: Prof. Wen-Qing Pan, Senior engineer Xiu-Fen Zhai) -- To visit the Mesoproterozoic microbialite profiles in the Jixian National Geopark. The profiles are worldwide famous, with large thickness, good exposure and exquisite microbialites (Fig. 4). Robert Riding and many other scholars have studied them and published articles on them. Sampling is subject to approval.



Trip 4 (4 days; leader: Associate Prof. Xue-Song Tian) -- To visit the world's only Permian Lopingian coral reefs (Fig. 5), calcisponge reefs (Fig. 6), mysterious and controversial P-T boundary "microbialites", the cyanobacterial mold rocks (Fig. 7) in Cili, Hunan Province. It is only 1.3 hours' drive from the famous World Natural Heritage Zhangjiajie National Park (Fig. 8). Photographing and sample collecting are permitted.



Trip 5 (3 days; leader: Zhi-Yuan Zhang) -- To visit the granite complex beneath the Badaling part of the worldwide famous Great Wall (Fig. 9). The rocks were formed 110 million years ago. This site is a perfect combination of geological landscape and cultural heritage. Here you can not only watch various granite weathering landforms, but also feel the beauty of mountains and rivers and magnificence of human culture.



Trip 6 (4 days; leader: Associate research fellow Hai-Long Sun) -- To visit the colorful and stunning modern travertines and microbialites at the very famous World Natural Heritage Jiuzhaigou Natural Reserve (Figs. 10, 11). Sampling is subject to approval.



Trip 7 (5 days; leader: Research fellow Tian-Ran Chen) -- To visit the colorful modern coral reefs at Luhuitou and the Ximao and Dongmao islands, Hainan Province, China (Fig. 12, 13, 14). They are excellent places to survey the interaction between modern coral reef ecosystems and environments, and marine biodiversity. Sampling is subject to approval.



※ More than 15 participants are required for each trip. The conference will arrange and afford the travels and accommodations for these trips.

Publication of Abstract

The congress will compile an abstract collection. All attendees are encouraged to submit one or more abstracts. The abstracts should be in English, and include title, author's name, affiliation, email address, and text. Inserted figures are permitted. Please send your abstracts (word files) to biopetrology@qq.com.

High quality abstracts will be published in [Biopetrology](https://biopetrology.com), a peer reviewed international journal sponsored by the International Biopetrological Association (IBA), depending on the review results by members of the Academic Committees. The website of [Biopetrology](https://biopetrology.com) is <https://biopetrology.com>.

Excellent Presentation Awards for Students

Excellent Presentation Awards for Graduate and Undergraduate Students are selected from the oral presentations and posters by the Academic Committees of IBC. The number of the awards will be 1/10 of the oral presentations and posters by students. The winners will be awarded a certificate and a bonus of 1,500 CNY. In today's rate, 1 USD = 6.9 CNY.

Excellent Presentation Awards

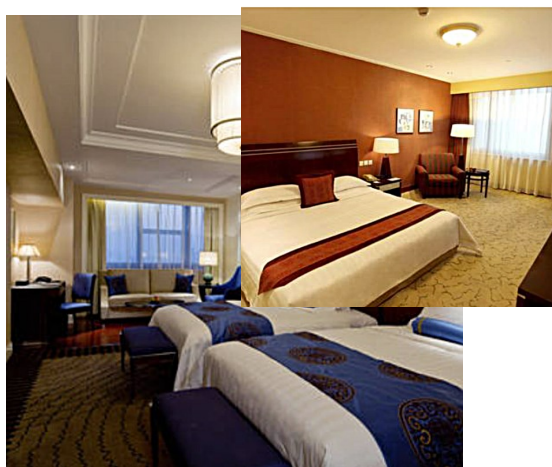
Five to ten **Excellent Oral Presentation Awards** will be selected by the Academic Committees from all non-student oral presentations. All winners will receive a certificate and a prize of 2,000 CNY.

Publication of Papers

All attendees are encouraged to submit research reports 3-25 page long for publication in the journal **Biopetrology** or **Journal of Palaeogeography**, based on peer-review results.

Please send your manuscript (word file with inserted figures) to biopetrology@qq.com.

Accommodation



(1) A five-star hotel with 322 1-double-bed or 2-single-bed rooms is ready for this conference. It will provide five types of specially discounted rooms at 350, 380, 400, 450, 490 CNY, respectively. Today, 1 USD = 6.9 CNY.

(2) A four-star hotel 2 km away is also ready to provide 50 1-double-bed and 2-single-bed rooms at 280 CNY.

Attendees should submit registration and accommodation requirements in the website <https://biopetrology.com/accom>, or through email, so that the congress will reserve the room for you.

Fees of Registration and Field Trips

- ◆ Attendees can pay fees in CNY, USD, euros, and other currencies at the exchange rates: 1USD = 6.9 CNY, 1 euros = 7.3 CNY.
 - ◆ Fees can be paid in three ways:
 - (1) Pay fees to: **Bank name:** Bank of China Shanghai Jiangchuan Road Branch. **Account Name:** Shanghai Chidu Conference and Exhibition Service Co. LTD. **Account Number:** 445584157230.
-

-
- (2) Do it in the website <https://biopetrology.com/pay>.
- (3) Non-Chinese attendees can pay fees in the hall of the five-star hotel.
- ◆ After you pay your fees, please fill in the table in the website <https://biopetrology.com/pay> with your name, affiliation, fee name, and amount, and submit it, or send these information to biopetrology@qq.com.
 - ◆ If you attend the conference online, you do not need to pay fees, but need to register in the website <http://biolithos.com/regist>.

Services	Fee names	March to July (CNY)	August (CNY)	September (CNY)
Registration	Fee 1a	2200	2300	2500
Registration (student)	Fee 1b	1500	1600	1800
Trip 2 (Near Shijiazhuang)	Fee 2a	1200	1300	1500
Trip 2 (Near Shijiazhuang) (student)	Fee 2b	800	900	1100
Trip 3 (Jixian)	Fee 3a	2450	2550	2650
Trip 3 (Jixian) (student)	Fee 3b	1900	2000	2100
Trip 4 (Cili Permian reefs)	Fee 4a	3200	3300	3400
Trip 4 (Cili Permian reefs) (student)	Fee 4b	2200	2300	2400
Trip 5 (the Great Wall granite)	Fee 5a	2650	2750	2850
Trip 5 (the Great Wall granite) (student)	Fee 5b	2000	2100	2200
Trip 6 (Jiuzhaigou travertines)	Fee 6a	4700	4800	4900
Trip 6 (Jiuzhaigou travertines) (student)	Fee 6b	3300	3400	3500
Trip 7 (Modern reefs)	Fee 7a	6500	6600	6700
Trip 7 (Modern reefs) (student)	Fee 7b	4500	4600	4700

Refund policy

The attendees who have registered and paid the fees, if unable to attend the conference or field trips for some reasons, can get a full refund through sending an email to biopetrology@qq.com.

Financial Aids

The conference will provide financial aids to the attendees whose one-way travel cost is >3000 CNY (= 434 USD). Applicants are requested to submit an application to biopetrology@qq.com. The decision on aids will be made by the Organizing Committees of the conference. Overseas scholars can participate in the conference online.

Sponsor

IBA, the International Biopetrological Association.

Organizers

- (1) Hebei GEO University
- (2) Hebei Key Laboratory of Strategic Critical Mineral Resources
- (3) Henan Polytechnic University
- (4) Shandong Provincial Key Laboratory of Sedimentary Mineralization and Sedimentary Minerals
- (5) Northwest Branch of Research Institute of Petroleum Exploration and Development, Petrochina
- (6) Institute of Geology and Geophysics, Chinese Academy of Sciences

Co-organizers

- (1) Chengdu University of Technology
- (2) China University of Geosciences (Wuhan)
- (3) Hefei University of Technology
- (4) Guangxi University
- (5) National Natural Science Foundation of China
- (6) Northeastern University
- (7) Northwest University
- (8) Shandong University of Science and Technology
- (9) Southwest Petroleum University
- (10) Yangtze University

Organizing Committee

Chairman

Bin Wang (Professor, Vice President of Hebei GEO University)

Secretary-general

Ya-Sheng Wu (Professor, Chairman of the Academic Committee of IBA)

Deputy secretary general

Zhi-liang Dong, Zuo-Zhen Han, Hong Hua, Qiang Ji, Hongwei Kuang, Xian-Guo Lang, Yong-An Qi, Yuefen Shen, Jian-Gong Wang

Members

An-Jiang Shen, Ao-Ran Liu, Bogusław Kołodziej, Chunfang Cai, Dominic Papineau, Deng Liu, En-Pu Gong, Fritz Neuweiler, Gong-Liang Yu, Guang-You Zhu, Hai-Long Sun, Hao Yan, Hong-Mei Wang, Hong-Xia Jiang, Hua-Xiao Yan, Jin-Hua Li, Jing-Jie Cao, Ke Pang, Ke-Fu Yu, LeYaoi, Li-Fu Tian, Li-Jing Liu, Luisa I. Falcon, Markus Aretz, Michael Steiner, Ming-Cai Hou, Ming-Yi Hu, Peng-Ju Liu, Qiang Ji, Robert Burne, Robert Riding, Su-Ping Ma, Subir Sarkar, Tian-Ran Chen, Wen-Chao Yu, Wen-Qing Pan, Wen-Sheng Wu, Xian-Cai Lu, Xiao-Min Xie, Xiu-Cheng Tan, Xiu-Juan Zheng, Xin-Qiang Wang, Xiu-Fen Zhai, Xiu-Juan Zheng, Xiu-Qing Yang, Xue-Song Tian, Yi-Liang Li, Ying-Jie Li, Yong-Li Zhang, Yuan Wang, Yue Li, Zhi-Fei Zhang, Zhi-Liang Dong, Zhi-Liang He, Zhong-Wu Lan.

Academic Committee

General Academic Director

Shu-Cheng Xie (Academician of Chinese Academy of Sciences, Professor at China University of Geosciences at Wuhan)

Chairs

Ya-Sheng Wu (Chairman of IBA)

Robert Riding (University of Tennessee, USA)

Dominic Papineau (University College London, UK)

Luisa I. Falcón (National Autonomous University of Mexico, Mexico)

Members

Abigail C. Allwood (USA), **Achim Wehrmann** (Germany), **An-Jiang Shen** (China), **Brian Jones** (Canada), **Christophe Dupraz** (Sweden), **Chun-Fang Cai** (China), **Concha Arenas** (Spain), **Deng Liu** (China), **Dong-Jie Tang** (China), **Emmanuelle Vennin** (France), **En-Pu Gong** (China), **Edoardo Perri** (Italy), **Fei Li** (China), **Fumito Shiraishi** (Japan), **Geraint Wyn Hughes** (UK), **Gong-Liang Yu** (China), **Guang-You Zhu** (China), **Hai-Ruo Qing** (Canada), **Hong-Mei Wang** (China), **Hong Hua** (China), **Hong-Wei Kuang** (China), **Hong-Xia Jiang** (China), **Jeong-Hyun Lee** (Korea), **Ji-Tao Chen** (China), **Jian-Gong Wang** (China), **Jin-Hua Li** (China), **Karim Benzerara** (France), **Ke Pang** (China), **Ke-Fu Yu** (China), **Le Yao** (China), **Ming-Cai Hou** (China), **Ming-Xiang Mei** (China), **Ming-Yi Hu** (China), **Peng-Ju Liu** (China), **Pieter T. Visscher** (USA), **R. P. Reid** (USA), **Ricardo J. Jahnert** (Brazil), **Robert Riding** (USA), **Qiang Ji** (China), **Shu-Hai Xiao** (USA), **Subir Sarkar** (India), **Tadeusz Marek Peryt** (Poland), **Tian-Ran Chen** (China), **Xian-Cai Lu** (China), **Xian-Guo Lang** (China), **Xiu-Cheng Tan** (China), **Yue-Feng Shen** (China), **Yi-Liang Li** (Hongkong, China), **Yin-Ye Wu** (China), **Yong-An Qi** (China), **Yue-Feng Shen** (China), **Zai-Hua Liu** (China), **Zhi-Fei Zhang** (China), **Zhi-Liang He** (China), **Zuo-Zhen Han** (China).

Important dates

Submit abstracts	March 5—September 10, 2023
Submit session proposals	March 5—June 30, 2023
Registration	March 5—September 21, 2023
Pay fees	March 5—September 21, 2023

Sponsorship Policy

Universities, research institutes and enterprises are welcome to financially support the conference. Universities and research institutes that provide financial aids to the conference are automatically included in the list of organizers. The companies that have sponsored the conference will have the right to show and promote their business or products at the conference booth. For details about sponsorship, please contact: [19933071917](tel:19933071917) (Ao-Ran Liu).

Registration

You can register in three ways:

- (1) To register through the congress website <https://biopetrology.com/regist> on your PC,
- (2) To send your registration information to biopetrology@qq.com,
- (3) To register in the hall of the five-star receipt hotel.

Please send abstracts, applications or other messages to biopetrology@qq.com.

Contact Information

Mobile phone and wechat:

+86-10-18618382036 (Hong-Xia Jiang), +86-10-19933071917 (Ao-Ran Liu) , +86-10-18032066002 (Zhi-Yuan Zhang)

Email:

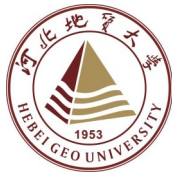
biopetrology@qq.com.

Website:

<http://biopetrology.com/1stIBC> (for PC)

<http://biopetrology.com/1IBC> (for mobile phone, unable to register)





If it is not convenient for you to register online, you can select the following text in the PDF of this Circular, copy it to Winword, fill in it, and email it to biopetrology@qq.com.

Attendance Receipt (registration information)

Name: _____, student (yes or not): _____

If employed, your affiliation: _____

If you are a student, your university/institute's name:

Address: _____

Phone or mobile phone: _____

Email: _____

Room types (price) : _____

If it is a twin bed room, are you sharing (yes or no) : _____

If you give oral presentation, the title: _____

You will attend which session: _____

You will give oral presentation or poster: _____

Whether to participate in the post-conference field trips, which trip: _____

If you have paid fees, the amount: _____, the date of payment: _____,

For what service (such as "registration fee + trip 2) : _____

Date: _____